

*Redonnons le meilleur à la terre*

RHPEH

6069

## Definition

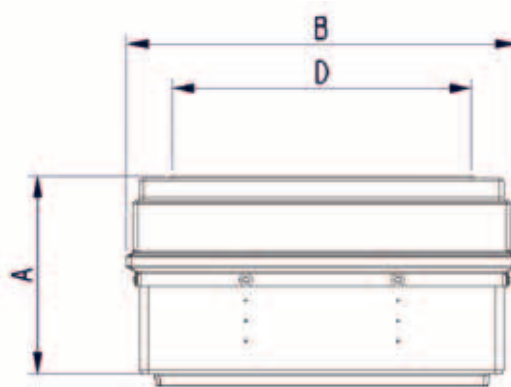
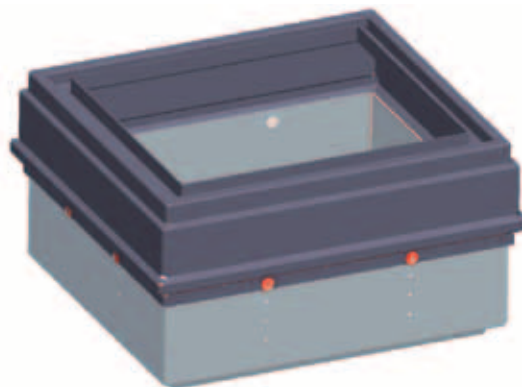
Extension shafts in high density polyethylene. This material is stable and durable. Extension shafts adjustable from 300 to 450 mm and designed to provide freeze protection and let access to the frame. Access to the separator is indeed indispensable for its maintenance and good operation.

## Use

Extension shafts suitable for polyethylene separators with rectangular frame.

## Installation

Put the extension shaft on the U-frame of the separators and set the desired height by drilling and screwing it.



Reference	A	B	D
RH6069	300 à 450	900 x 820	600 x 690